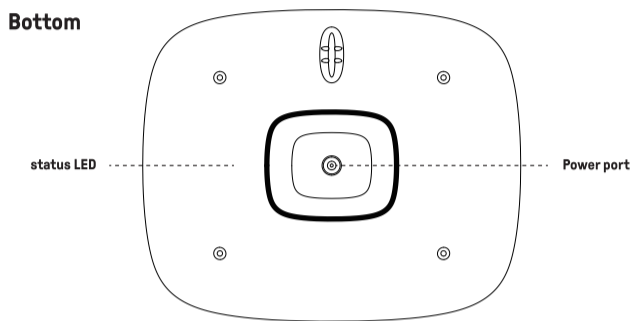
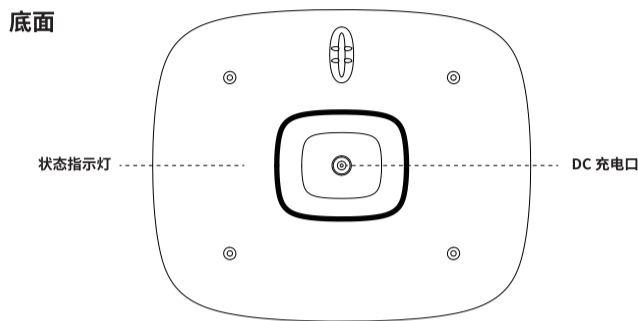
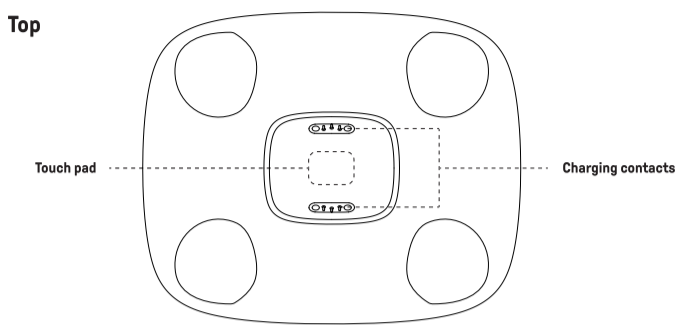
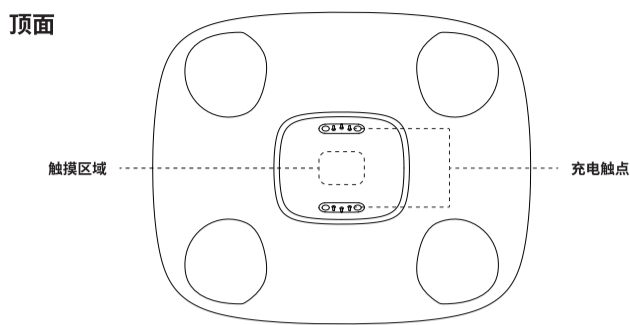


Xbox 双手柄充电座

Dual Charging Dock for Xbox Wireless Controllers



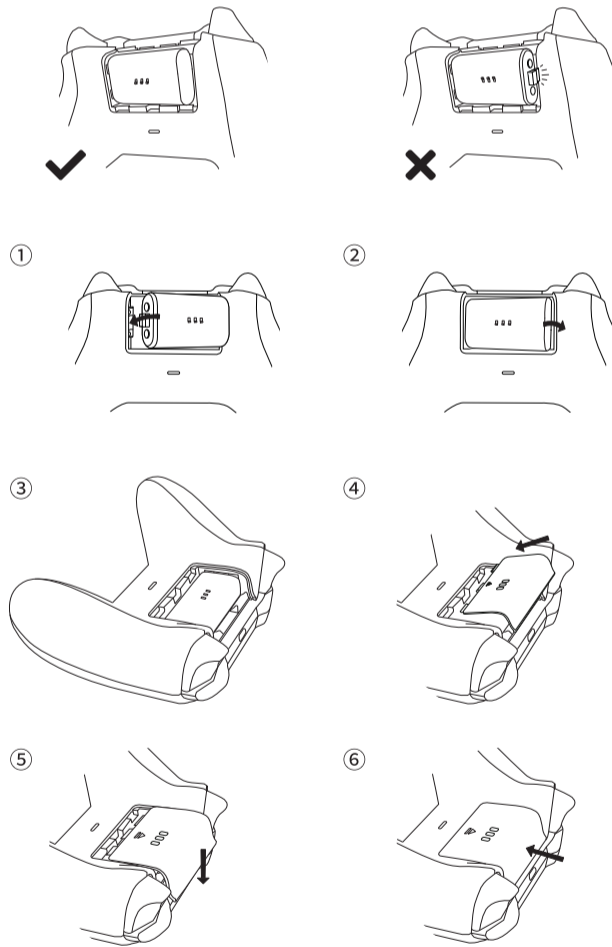
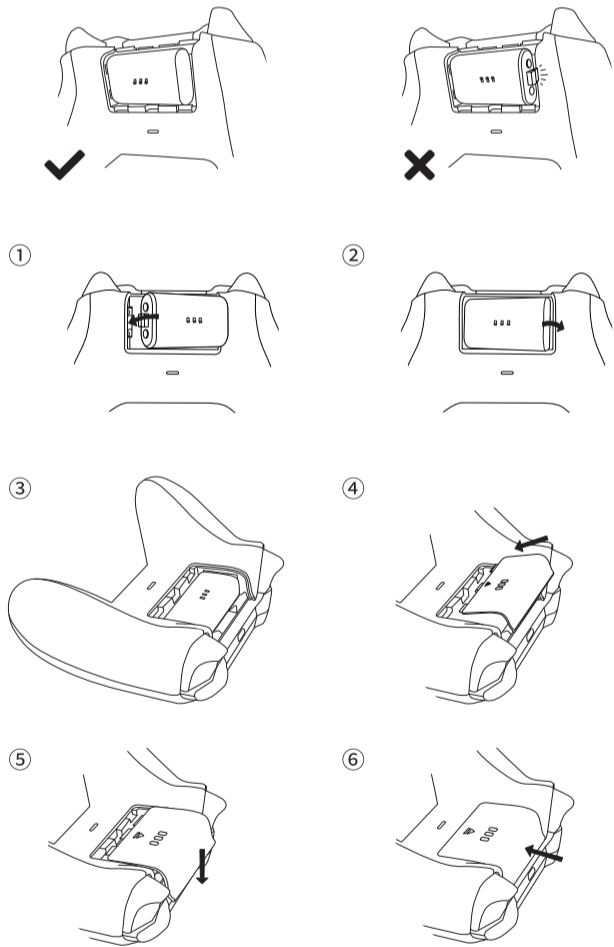
使用说明

1. 附带的可充电电池组插入 Xbox 控制器的背面 (充电触点朝外)。
2. 然后将附带的电池盖向下滑入控制器。
3. 将电源适配器插入充电座底部电源连接口, 然后将电源适配器的另一端插入电源。
4. 充电指示灯将打开 3 秒, 然后关闭, 指示待机状态。
5. 将 Xbox 手柄放在充电座底部固定位上, 并确保其与充电触点接触。
6. 底座上的充电指示灯将被激活, 并显示手柄各自的充电状态。

\* 需要区分 Xbox One 与 Xbox Series 的电池盖。

Instruction

- 1 - put the rechargeable battery pack into Xbox controller battery compartment (3 connecting dots facing out).
  - 2 - slide in the battery door downwards to close it
  - 3 - plug the power adapter jack into the charging port at the bottom, then connect the power adapter to the power supply.
  - 4 - white LED lights up for 3 seconds when power is through then charging dock goes to standby mode.
  - 5 - place the Xbox controller in the proper position on the charging dock
  - 6 - LED activates to indicate the charging status
- please make sure to use SBitDo battery doors with 3 connecting pins on  
- note: there are 2 types of battery doors, one for Xbox One Wireless controllers, one for Xbox Series X controllers



连接电源

- \* 琥珀色指示灯常亮 - 充电中
- \* 白色指示灯常亮 - 充满电
- \* 注意: 插入电源适配器并通电后, 白色指示灯呼吸一次, 代表通电正常。

LED Indicator

- amber light - battery charging
- white light - battery fully charged
- note: when charging dock is turned on, white LED lights up for 3 seconds to indicate the power is through

指示灯亮度调节

1. 按住充电底座顶部触摸区域 0.5 秒启动亮度调节。
2. 单击触摸区域使指示灯在高 - 中 - 低三档切换。

LED Brightness Modification

- 1 - press the touch pad on the top of the charging dock for 0.5 second to change the brightness
- 2 - brightness goes from bright > medium > dim in a cycle

注意事项

- 电池组内所包含的成分泄漏, 或这些成分的燃烧产物泄漏, 可能会造成人身伤害和损坏游戏设备, 避免接触皮肤。如果发生接触, 立即用肥皂和水彻底清洗。如果从电池组泄漏的液体接触到你的眼睛, 立即用水彻底冲洗并去看医生。
- 为避免电池泄漏:
- \* 不要使电池暴露在过度的物理冲击、振动或液体中。
  - \* 不要拆卸、试图修理或变形电池。
  - \* 不要在火灾中处理电池组。
  - \* 不要接触电池的端子或造成与金属物体的端子之间的短路。
  - \* 不要剥离或损坏电池标签。
  - \* 仅替换为相同或等效的电池类型。
  - \* 电池的插入应具有正确的极性。

Safety Guidelines

- leakage of ingredients contained within the battery pack, or the combustion products of the ingredients, can cause personal injury as well as damage to the game controller, avoid contact with skin. If contact occurs, immediately wash thoroughly with soap and water. If liquid leaking from a battery pack comes into contact with your eyes, immediately flush thoroughly with water and see a doctor to avoid battery leakage:
- do not expose battery to excessive physical shock, vibration, or liquids
  - do not disassemble, repair or deform the battery
  - do not dispose of battery pack in a fire
  - do not touch the terminals of the battery or cause a short between the terminals with a metal object
  - do not peel or damage the battery label
  - replace only with the same battery pack
  - batteries are to be inserted with correct polarity