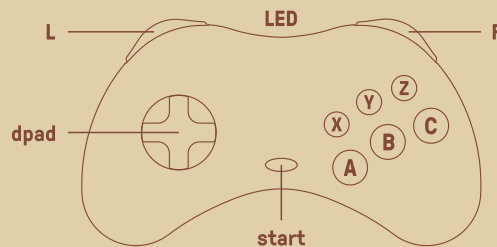
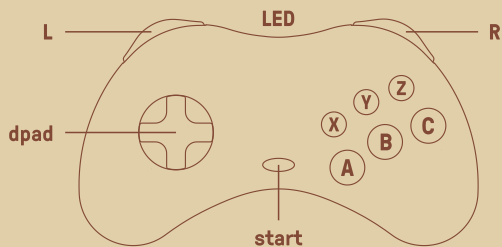
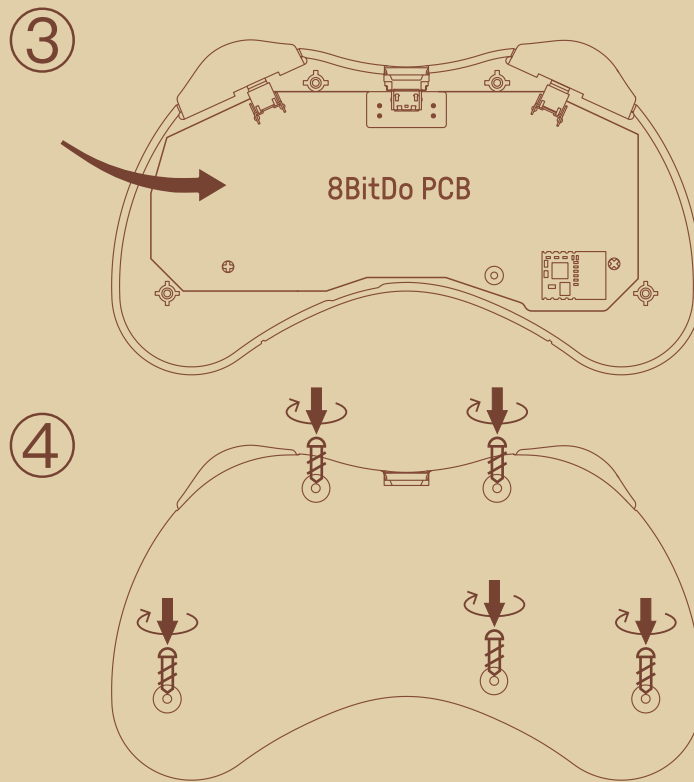
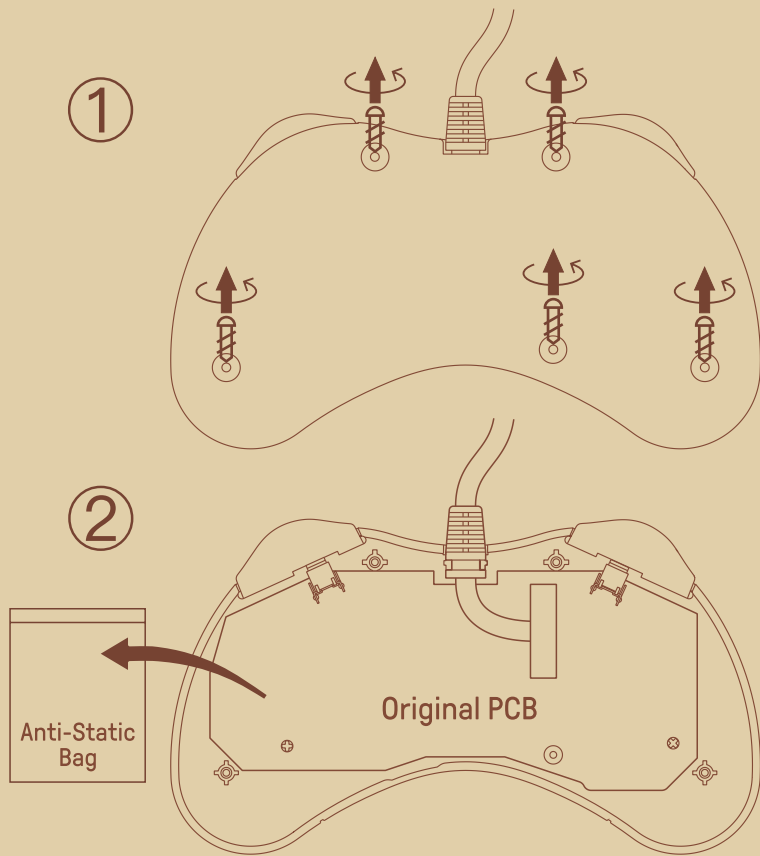


Instructions - S30 Modkit

* Please handle it with care.

We are not responsible for any damage caused in use.



Controller Mode

- D-input: press **B + start** to turn on the controller, LED will blink once per cycle
- X-input: press **X + start** to turn on the controller, LED will blink twice per cycle
- mac mode: press **A + start** to turn on the controller, LED will blink 3 times per cycle
- Switch mode: press **Y + start** to turn on the controller, LED will blink 4 times per cycle
- Pairing: press and hold **L + R** for 3 seconds to enter its pairing mode, LED starts to rapidly blink
- Press **start** to turn back on the controller after mode switching, controller stays on its last mode

Hot Keys

- Switch mode: **down + start** = Switch HOME button; **up + start** = Switch - button
- X-input mode: **up + start** = Back button

battery

status -	LED indicator -
low battery mode	red LED blinks
battery charging	red LED stays solid
battery fully charged	LED turns off

- It takes about 90 minutes to fully charge

support



- please visit support.8bitdo.com for further information & additional support

工作模式

- Dinput 模式: 按住 **B + start** 开启, 指示灯闪烁 1 下 / 次。
- Xinput 模式: 按住 **X + start** 开启, 指示灯闪烁 2 下 / 次。
- mac 模式: 按住 **A + start** 开启, 指示灯闪烁 3 下 / 次。
- Switch 模式: 按住 **Y + start** 开启, 指示灯闪烁 4 下 / 次。
- * 配对: 非连接状态下, 按住 **L + R** 键 3 秒进入配对连接状态(指示灯快闪)。
- * 切换模式后下次使用可直接按 **start** 键启动。

热键功能

- * **down + start** 在 Switch 模式为 HOME 键功能
- * **up + start** 在 Switch, 模式为减号键, 在 Xinput 模式为 Back 键功能

电源

电量状态	指示灯状态
低电量	红灯闪
充电中	红灯亮
充电完成	指示灯熄灭

- * 可使用配备的 USB 线进行充电, 充电时间约 90 分钟。

固件升级



- * 请访问 <http://support.8bitdo.cn/> 了解详细信息。